



中国重型机械工业协会  
葫芦单双梁起重专业分会  
桥式起重机分会  
会员单位



微信公众号

河南省飞马起重机械集团有限公司  
HENAN FEIMA LIFTING MACHINERY GROUP CO., LTD.

[www.hnfeima.com](http://www.hnfeima.com)

河南省飞马起重机械集团有限公司  
HENAN FEIMA LIFTING MACHINERY GROUP CO., LTD.





河南省飞马起重机械集团有限公司  
HENAN FEIMA LIFTING MACHINERY GROUP CO., LTD.

桥式起重机 / Bridge crane

门式起重机 / Portal crane

悬臂起重机 / Cantilever crane

新型起重机 / New crane

工程门式起重机 / Engineering gantry crane

架桥机 / Bridge erecting machine

电动葫芦 / Electric hoist

## 企业简介

河南省飞马起重机械集团有限公司是生产起重机械、钢丝绳电动葫芦、建筑机械及起重配件的专业厂家，是中国重型机械工业协会桥式起重机专业委员会会员单位、起重葫芦分会理事单位。公司率先通过ISO9001:2008国际质量体系、ISO14001:2004环境管理体系、GB/T2801-2001职业健康和安全管理三体系认证。

公司主要生产桥、门式起重机、悬臂起重机、新型欧式起重机、工程门式起重机、架桥机，CD<sub>1</sub>/MD<sub>1</sub>/HC/DJCD/DJMD/TZCD/TZMD/HM型钢丝绳电动葫芦，SZCD/SZMD型冶金电动葫芦，BCD/BCDS/HB/HBS型防爆电动葫芦，FOH/FOHS型欧式电动葫芦等。产品质量由中华联合财产保险公司承保。

公司是中国质量诚信企业、河南省科技企业、安全生产标准化三级企业，“长飞”牌钢丝绳电动葫芦为“河南省名牌产品”，“长飞”（钢丝绳电动葫芦）为河南省著名商标，“飞马”（起重机）为河南省著名商标。

“坚持质量第一，实现持续改进，满足社会需要，确保顾客满意”是公司的宗旨，用户满意是公司追求的目标，精心制造安全可靠和用心服务是公司经营的方针。创新无限，信誉永恒；产品质量是企业的生命，信誉建设是公司的未来。

## ENTERPRISE INTRODUCTION

Henan feima lifting machinery group co., Ltd. Is a professional manufacturer of hoisting machinery, wire rope electric hoist, construction machinery and hoisting accessories. It is a member of the bridge crane professional committee of China Heavy Machinery Industry Association and a member of the hoist branch. The company took the lead in passing ISO9001:2008 international quality system, ISO14001:2004 environmental management system and GB / t2801-2001 occupational health and safety management three system certification.

The company mainly produces bridge, gantry crane, cantilever crane, new European crane, engineering gantry crane, bridge erecting machine, CD<sub>1</sub> / MD<sub>1</sub> / HC / djcd / djmd / tzcd / tzmd / HM type steel wire rope electric hoist, szcd / szmd type metallurgical electric hoist, BCD / bcds / Hb / HBS type explosion-proof electric hoist, FOH / fohs type European electric hoist, etc. The product quality is insured by China United Property Insurance Company.

The company is a quality and integrity enterprise in China, a science and technology enterprise in Henan Province, and a three-level enterprise of safety production standardization. "Changfei" brand wire rope electric hoist is "famous brand product in Henan Province", "Changfei" (wire rope electric hoist) is a famous trademark in Henan Province, "Feima" (crane) is a famous trademark in Henan Province.

"Adhere to quality first, achieve continuous improvement, meet social needs, and ensure customer satisfaction" is the purpose of the company, customer satisfaction is the goal of the company, and careful manufacturing of safe and reliable and attentive service is the company's business policy. The product quality is the life of the enterprise, and the reputation construction is the future of the company.



## 主要产品 MAIN PRODUCTS



桥式起重机  
Bridge crane



门式起重机  
Portal crane



新型欧式  
起重机  
New European  
crane



悬臂起重机  
Cantilever crane



工程门式  
起重机  
Engineering gantry  
crane



架桥机  
Bridge erecting  
machine



电动平车  
Electric flat car



新型欧式  
电动葫芦  
New European  
electric hoist



CD电动葫芦  
Electric flat car

精心智造 / 开拓创新  
追求卓越 / 共享未来

Elaborate intelligence  
Innovation  
Pursue excellence  
Share the future

FEIMAKS



## 桥式起重机

### BRIDGE CRANE

桥架在高架轨道上运行的一种桥架型起重机，又称天车。桥式起重机的桥架沿铺设在两侧高架上的轨道纵向运行，起重小车沿铺设在桥架上的轨道横向运行，构成一矩形的工作范围，就可以充分利用桥架下面的空间吊运物料，不受地面设备的阻碍。

A bridge crane, also known as crown block, which runs on the elevated track. The bridge of the bridge crane runs longitudinally along the track laid on the viaduct on both sides, and the lifting trolley runs transversely along the track laid on the bridge, forming a rectangular working range, so that the space under the bridge can be fully used to lift materials, not hindered by the ground equipment.



铸造桥式起重机  
Casting bridge crane

## 优化设计 / 自重轻 / 轮压小 / 高度矮

Optimized design / light weight / small wheel pressure / low height



双梁抓斗桥式起重机  
Double beam grab bridge crane



QD型通用桥式起重机  
QD general bridge crane



LD型电动单梁起重机 LD electric single beam crane



LX型电动单梁悬挂起重机  
LX electric single beam suspension crane



防爆电动葫芦桥式起重机  
Explosion proof electric hoist bridge crane



## 门式起重机

### PORTAL CRANE

门式起重机主要用于室外的货场、料场货、散货的装卸作业。金属结构像门形框架，承载主梁下安装两条支脚，可以直接在地面的轨道上行走，主梁两端可以具有外伸悬臂梁。门式起重机具有场地利用率高、作业范围大、适应面广、通用性强等特点。

The gantry crane is mainly used for the loading and unloading of outdoor goods yard, stock yard and bulk cargo. The metal structure is like a portal frame. Two legs are installed under the main beam, which can walk directly on the track on the ground. The two ends of the main beam can have overhanging cantilever beams. Gantry crane has the characteristics of high utilization rate of site, wide operation range, wide adaptability and strong universality.



轮胎式门式起重机  
Rubber tyred gantry crane



MG型双梁通用门式起重机 MG type double beam universal gantry crane

## 结构紧凑 / 变频控制 / 运行平稳

Compact structure / variable frequency control / stable operation



MDG型单梁通用门式起重机  
MDG single beam universal gantry crane



龙门集装箱门式起重机  
Gantry container gantry crane



双主梁半门式起重机  
Double girder half gantry crane



电动葫芦单梁门式起重机  
Electric single beam gantry crane



## 悬臂起重机

### CANTILEVER CRANE

定柱式旋臂起重机是固定在支柱上的旋臂起重机，可绕安装点左右摇摆 180°，实现物料的搬运作业。

The fixed column jib crane is a jib crane fixed on the pillar, which can swing 180° around the installation point to realize the material handling.



壁行式悬臂起重机是机械制造、装配车间的专用机械，它利用布置在多层装配车间墙壁上的轨道，在墙壁上行走，可以充分利用车间的空间结构，节约了生产场地，作业灵活。壁行机按主梁结构分单主梁和双主梁两种形式。

Wall mounted cantilever crane is a special machine for machinery manufacturing and assembly workshop. It can make full use of the space structure of workshop by using the track arranged on the wall of multi-layer assembly workshop and walking on the wall, saving production site and flexible operation. According to the main beam structure, the wall traveling machine is divided into single main beam and double main beams.

## 路桥门式起重机

### ROAD AND BRIDGE GANTRY CRANE

路桥门式起重机主要用于桥梁建设，工作速度慢，由门架、卷扬机小车、大车运行机构、司机室和电气控制系统组成。

门架为桁架结构，具有结构轻、抗风力强等优点。主梁采用三角桁架结构，上面铺设轨道，供小车沿主梁方向作横向移动。支腿采用箱形或钢管两种形式。

Road and bridge gantry crane is mainly used for bridge construction with slow working speed. It is composed of gantry, winch trolley, crane operation mechanism, cab and electrical control system.

The gantry is a truss structure, which has the advantages of light structure and strong wind resistance. The main beam is of triangular truss structure, on which the track is laid for the trolley to move laterally along the direction of the main beam. The outrigger adopts two forms of box or steel pipe.



## 架桥机

### BRIDGE ERECTING MACHINE



架桥机是将预制好的梁片放置到预制好的桥墩上去的设备，在公路、铁路轨道上行驶，用于整跨架设小跨梁的桥梁施工机械。因其架桥工效高，在中国铁路桥梁标准设计中，多考虑以它架设为设计原则。

The bridge erecting machine is a kind of equipment that places the prefabricated beam pieces on the prefabricated piers, and runs on the highway and railway tracks, which is used for the whole span of the bridge construction machinery for erecting small span beams. Because of its high efficiency in bridge construction, it is often considered as the design principle in the standard design of railway bridges in China.



## 新型欧式起重机

### NEW EUROPEAN CRANE

新型起重机与原有通用起重机产品相比，自重减轻约15~30%，最大轮压减小约10~35%，可以降低起重机对厂房结构的要求，节约厂房制造成本。传动机构的核心部件减速器全部采用硬齿面、高精度齿轮副，加上钢制卷筒、锻造车轮以及变频调速系统的应用，使得该型号起重机成为传统通用桥式起重机的更新换代产品，适用于机械制造、装配、石油化工、仓储物流、电力建设、造纸、铁路等行业。

Compared with the original general crane products, the self weight of the new crane is reduced by about 15-30% and the maximum wheel pressure is reduced by about 10-35%, which can reduce the requirements of the crane on the plant structure and save the manufacturing cost of the plant. The reducer, the core part of the transmission mechanism, adopts hard tooth surface, high-precision gear pair, plus the application of steel drum, forged wheel and frequency conversion speed control system, which makes this type of crane a new generation of traditional general bridge crane, suitable for machinery manufacturing, assembly, petrochemical industry, storage logistics, power construction, paper making, railway and other industries.



## 充分利用空间/维护成本低/高效精准

Make full use of space / low maintenance cost / high efficiency and accuracy



新型欧式单梁起重机  
New European single beam crane



新型欧式单梁悬挂起重机  
A new European single beam suspension crane



新型欧式双梁起重机 New European double beam crane



新型欧式双梁起重机  
New European double beam crane



新型欧式门式起重机  
New European gantry crane



# 新型单梁钢丝绳电动葫芦

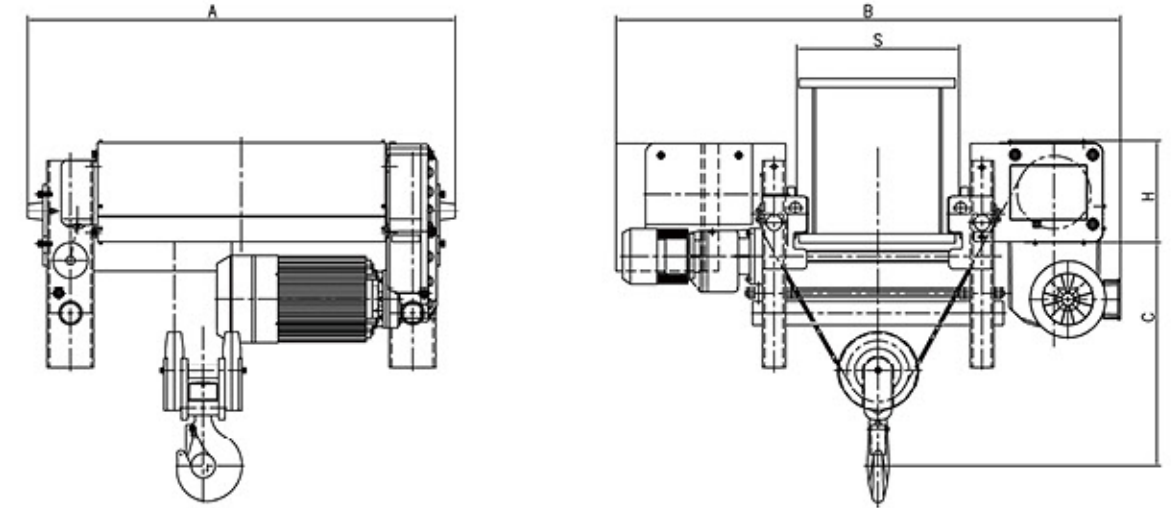
## A NEW TYPE OF WIRE ROPE ELECTRIC HOIST

模块组合 结构紧凑  
Compact modular structure

定位精确 搬运快捷  
Accurate positioning and quick handling

运行安静 环保节能  
Quiet operation, environmental protection and energy saving

经久耐用 安全可靠  
Durable, safe and reliable



### 产品配置

### Product configuration

- ◎双速/变速起升电机      ◎Double speed / variable speed lifting motor
- ◎起升电磁盘式制动器, 免维护设计      ◎Lifting electromagnetic disc brake, maintenance free design
- ◎380V/3Ph/50Hz供电电压      ◎Power supply voltage 380V / 3Ph / 50Hz
- ◎控制电压48V      ◎Control voltage 48V
- ◎起升限位开关      ◎Lifting limit switch
- ◎小车运行变频电机, 速度5~20m/min      ◎Frequency conversion motor for trolley operation, speed 5-20 M / min
- ◎电机防护等级IP55, 绝缘等级F      ◎Motor protection class IP55, insulation class F
- ◎吊钩组, 带安全卡扣      ◎Hook set with safety buckle
- ◎起重限制器      ◎Crane limiter
- ◎使用环境温度-20℃~+40℃      ◎Working environment temperature - 20 °C ~ + 40 °C

型号 type	起重量 Capacity (t)	起升高度 Lifting height (m)	工作等级 Work level (FEM/ISO)	起升速度 Lifting speed (m/min)	起升功率 Lifting power (kW)	运行速度 Travelling speed (m/min)	运行功率 Travelling power (kW)	尺寸 size H (mm)	尺寸 size C (mm)	尺寸 size A (mm)	尺寸 size B (mm)	尺寸 size S (mm)
OH <sub>FM</sub> -3	3	6	2m/M5	5/0.8	3.2/0.45	5-20	0.37	244	385	932	1087-1587	200-500
OH <sub>FM</sub> -3	3	9	2m/M5	5/0.8	3.2/0.45	5-20	0.37	244	385	1082	1087-1587	200-500
OH <sub>FM</sub> -3	3	12	2m/M5	5/0.8	3.2/0.45	5-20	0.37	244	385	1282	1087-1587	200-500
OH <sub>FM</sub> -3	3	15	2m/M5	5/0.8	3.2/0.45	5-20	0.37	244	385	1482	1087-1587	200-500
OH <sub>FM</sub> -3	3	18	2m/M5	5/0.8	3.2/0.45	5-20	0.37	244	385	1682	1087-1587	200-500
OH <sub>FM</sub> -5	5	6	2m/M5	5/0.8	6.1/1	5-20	0.5	266	495	940	1095-1395	200-500
OH <sub>FM</sub> -5	5	9	2m/M5	5/0.8	6.1/1	5-20	0.5	266	495	1090	1095-1395	200-500
OH <sub>FM</sub> -5	5	12	2m/M5	5/0.8	6.1/1	5-20	0.5	266	495	1290	1095-1395	200-500
OH <sub>FM</sub> -5	5	15	2m/M5	5/0.8	6.1/1	5-20	0.5	266	495	1490	1095-1395	200-500
OH <sub>FM</sub> -5	5	18	2m/M5	5/0.8	6.1/1	5-20	0.5	266	495	1690	1095-1395	200-500
OH <sub>FM</sub> -10	10	6	2m/M5	5/0.8	9.5/1.5	5-20	0.75	296	792	940	1282-1582	200-500
OH <sub>FM</sub> -10	10	9	2m/M5	5/0.8	9.5/1.5	5-20	0.75	296	792	1090	1282-1582	200-500
OH <sub>FM</sub> -10	10	12	2m/M5	5/0.8	9.5/1.5	5-20	0.75	296	792	1290	1282-1582	200-500
OH <sub>FM</sub> -10	10	15	2m/M5	5/0.8	9.5/1.5	5-20	0.75	296	792	1490	1282-1582	200-500
OH <sub>FM</sub> -10	10	18	2m/M5	5/0.8	9.5/1.5	5-20	0.75	296	792	1690	1282-1582	200-500
OH <sub>FM</sub> -16	16	6	2m/M5	4/0.6	16/2.6	5-20	0.75*2	300	900	980	1282-1591	200-500
OH <sub>FM</sub> -16	16	9	2m/M5	4/0.6	16/2.6	5-20	0.75*2	300	900	1190	1282-1591	200-500
OH <sub>FM</sub> -16	16	12	2m/M5	4/0.6	16/2.6	5-20	0.75*2	300	900	1365	1282-1591	200-500
OH <sub>FM</sub> -16	16	15	2m/M5	4/0.6	16/2.6	5-20	0.75*2	300	900	1540	1282-1591	200-500
OH <sub>FM</sub> -16	16	18	2m/M5	4/0.6	16/2.6	5-20	0.75*2	300	900	1715	1282-1591	200-500
OH <sub>FM</sub> -20	20	6	1Am/M4	4/0.6	16/2.6	5-20	0.75*2	300	900	980	1282-1591	200-500
OH <sub>FM</sub> -20	20	9	1Am/M4	4/0.6	16/2.6	5-20	0.75*2	300	900	1190	1282-1591	200-500
OH <sub>FM</sub> -20	20	12	1Am/M4	4/0.6	16/2.6	5-20	0.75*2	300	900	1365	1282-1591	200-500
OH <sub>FM</sub> -20	20	15	1Am/M4	4/0.6	16/2.6	5-20	0.75*2	300	900	1540	1282-1591	200-500
OH <sub>FM</sub> -20	20	18	1Am/M4	4/0.6	16/2.6	5-20	0.75*2	300	900	1715	1282-1591	200-500



# 新型双梁钢丝绳电动葫芦

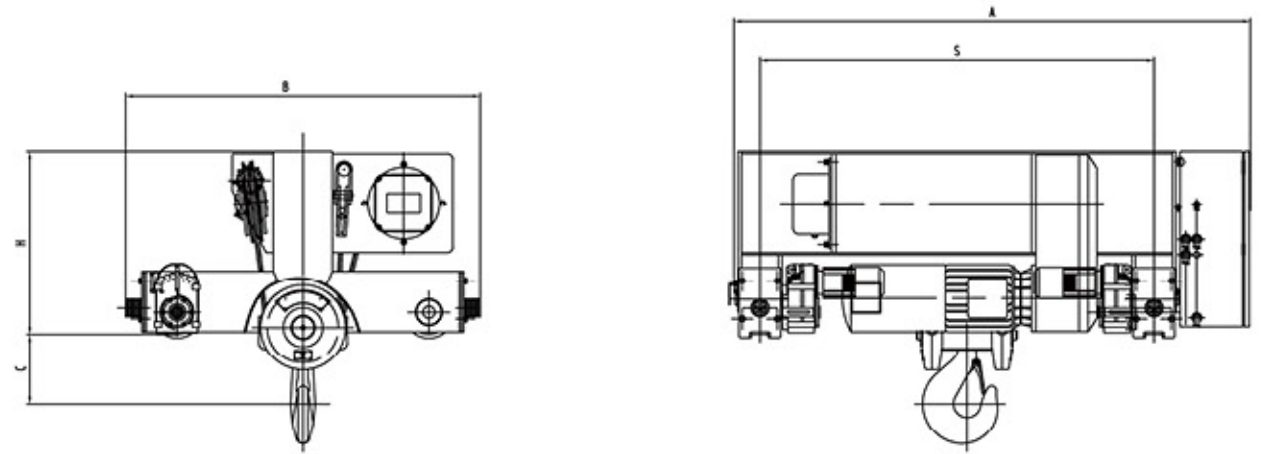
## A NEW TYPE OF WIRE ROPE ELECTRIC HOIST

模块组合 结构紧凑  
Compact modular structure

定位精确 搬运快捷  
Accurate positioning and quick handling

运行安静 环保节能  
Quiet operation, environmental protection and energy saving

经久耐用 安全可靠  
Durable, safe and reliable



### 产品配置

### Product configuration

- ◎双速/变速起升电机      ◎Double speed / variable speed lifting motor
- ◎起升电磁盘式制动器, 免维护设计      ◎Lifting electromagnetic disc brake, maintenance free design
- ◎380V/3Ph/50Hz供电电压      ◎Power supply voltage 380V / 3Ph / 50Hz
- ◎控制电压48V      ◎Control voltage 48V
- ◎起升限位开关      ◎Lifting limit switch
- ◎小车运行变频电机, 速度5~20m/min      ◎Frequency conversion motor for trolley operation, speed 5-20 M / min
- ◎电机防护等级IP55, 绝缘等级F      ◎Motor protection class IP55, insulation class F
- ◎吊钩组, 带安全卡扣      ◎Hook set with safety buckle
- ◎起重限制器      ◎Crane limiter
- ◎使用环境温度-20℃~+40℃      ◎Working environment temperature - 20 °C ~ + 40 °C

型号 type	起重量 Capacity (t)	起升高度 Lifting height (m)	工作等级 Work level (FEM/ISO)	起升速度 Lifting speed (m/min)	起升功率 Lifting power (kW)	运行速度 Travelling speed (m/min)	运行功率 Travelling power (kW)	尺寸 size H (mm)	尺寸 size C (mm)	尺寸 size A (mm)	尺寸 size B (mm)	尺寸 size S (mm)
OH <sub>FM</sub> -3	3	6	2m/M5	5/0.8	3.2/0.45	5-20	0.18*2	430	350	1850	1240	1400
OH <sub>FM</sub> -3	3	9	2m/M5	5/0.8	3.2/0.45	5-20	0.18*2	430	350	1850	1240	1400
OH <sub>FM</sub> -3	3	12	2m/M5	5/0.8	3.2/0.45	5-20	0.18*2	430	350	1850	1240	1400
OH <sub>FM</sub> -3	3	15	2m/M5	5/0.8	3.2/0.45	5-20	0.18*2	430	350	2150	1240	1700
OH <sub>FM</sub> -3	3	18	2m/M5	5/0.8	3.2/0.45	5-20	0.18*2	430	350	2450	1240	2000
OH <sub>FM</sub> -5	5	6	2m/M5	5/0.8	6.1/1	5-20	0.18*2	430	350	1850	1240	1400
OH <sub>FM</sub> -5	5	9	2m/M5	5/0.8	6.1/1	5-20	0.18*2	430	350	1850	1240	1400
OH <sub>FM</sub> -5	5	12	2m/M5	5/0.8	6.1/1	5-20	0.18*2	430	350	1850	1240	1400
OH <sub>FM</sub> -5	5	15	2m/M5	5/0.8	6.1/1	5-20	0.18*2	430	350	2150	1240	1700
OH <sub>FM</sub> -5	5	18	2m/M5	5/0.8	6.1/1	5-20	0.18*2	430	350	2450	1240	2000
OH <sub>FM</sub> -10	10	6	2m/M5	5/0.8	9.5/1.5	5-20	0.37*2	540	360	1850	1240	1400
OH <sub>FM</sub> -10	10	9	2m/M5	5/0.8	9.5/1.5	5-20	0.37*2	540	360	1850	1240	1400
OH <sub>FM</sub> -10	10	12	2m/M5	5/0.8	9.5/1.5	5-20	0.37*2	540	360	2150	1240	1700
OH <sub>FM</sub> -10	10	15	2m/M5	5/0.8	9.5/1.5	5-20	0.37*2	540	360	2150	1240	1700
OH <sub>FM</sub> -10	10	18	2m/M5	5/0.8	9.5/1.5	5-20	0.37*2	540	360	2450	1240	2000
OH <sub>FM</sub> -16	16	6	2m/M5	4/0.6	16/2.6	5-20	0.55*2	640	480	2150	1610	1700
OH <sub>FM</sub> -16	16	9	2m/M5	4/0.6	16/2.6	5-20	0.55*2	640	480	2450	1610	2000
OH <sub>FM</sub> -16	16	12	2m/M5	4/0.6	16/2.6	5-20	0.55*2	640	480	2850	1610	2400
OH <sub>FM</sub> -16	16	15	2m/M5	4/0.6	16/2.6	5-20	0.55*2	640	480	3150	1610	2700
OH <sub>FM</sub> -16	16	18	2m/M5	4/0.6	16/2.6	5-20	0.55*2	640	480	3550	1610	3100
OH <sub>FM</sub> -20	20	6	1Am/M4	4/0.6	16/2.6	5-20	0.55*2	640	480	2150	1610	1700
OH <sub>FM</sub> -20	20	9	1Am/M4	4/0.6	16/2.6	5-20	0.55*2	640	480	2450	1610	2000
OH <sub>FM</sub> -20	20	12	1Am/M4	4/0.6	16/2.6	5-20	0.55*2	640	480	2850	1610	2400
OH <sub>FM</sub> -20	20	15	1Am/M4	4/0.6	16/2.6	5-20	0.55*2	640	480	3150	1610	2700
OH <sub>FM</sub> -20	20	18	1Am/M4	4/0.6	16/2.6	5-20	0.55*2	640	480	3550	1610	3100



# 行星FOHS型钢丝绳电动葫芦

## PLANETARY FOHS TYPE WIRE ROPE ELECTRIC HOIST

静音 平稳  
Quiet and steady

防冲顶 防绕绳  
Anti scour and anti winding rope

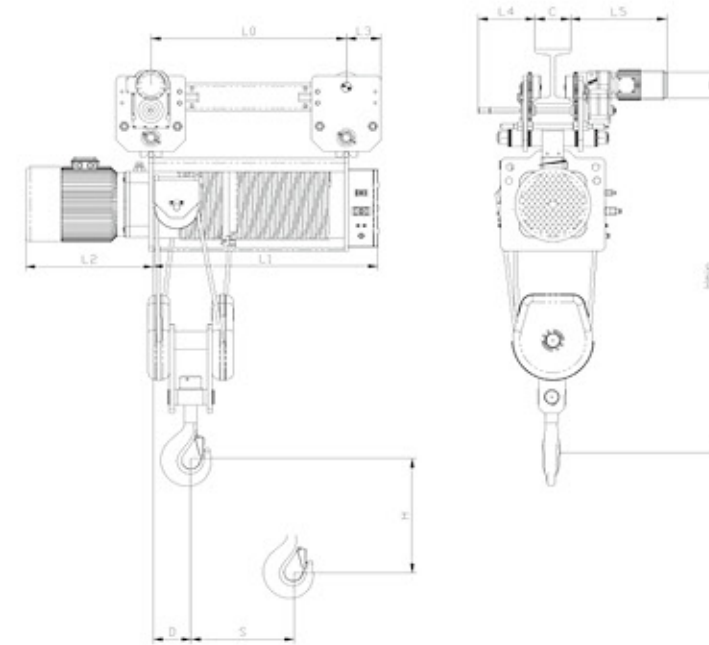
防斜拉 免维护  
No maintenance for cable-stayed protection

经久耐用 安全可靠  
Durable, safe and reliable



精细的设计保证了电动葫芦的美观，与高强度小车总成、驱动电机、模块化控制箱等相结合，保证了安全、可靠、经济。

Detailed design ensures smart appearance of the hoist, integrated with high strength trolley assembly, drive motor, modular control box etc. It also ensures safety, reliability and cost-effectiveness



型号 type	FOH/FOHS	FOH/FOHS	FOH/FOHS	FOH/FOHS	FOH/FOHS
起重量 Capacity (t)	3	5	10	16	20
工作等级 Work level (FEM/ISO)	M4	M4	M4	M4	M4
滑轮倍率 Pulley ratio	4/1	4/1	4/1	4/1	4/1
起升速度 Lifting speed (m/min)	5 5/1.6	5 5/1.6	4 4/1.3	4 4/1	4 4/1
起升功率 Lifting power (kW)	3 3/1	4.5 4.5/1.5	7.5 7.5/2.5	13 13/3.25	13 13/3.25
运行速度 Travelling speed (m/min)	20	20	20	20	20
运行功率 Travelling power (kW)	0.37	0.55	1.1	2 × 0.75	2 × 1.1
L2(mm)	单速 Single speed	425	425	510	610
	双速 Double speed	450	450	530	630
C(mm)	工字钢 I-beam	110-180	130-180	140-180	150-180
	H 型钢 H-beam	180-420	180-420	180-450	180-300
L5(mm)	460	500	520	520	540
L4(mm)	120	120	120	50	50
H1(mm)	121	151	179	179	179
Hmin(mm)	1105	1150	1400	1412	1500
L3(mm)	147	135	145	250	250
D(mm)	142	157	175	208	208
S(mm)	0.0174H	0.0182H	0.0191H	0.0194H	0.0194H
起升高度 Lifting height (m)	6	710	930	710	930
	9	885	1100	885	1100
	12	1060	1280	1060	1280
	16	1230	1450	1230	1450
尺寸 size	L0	L1	L0	L1	L0
	L0	L1	L0	L1	L0



# 行星FOH型钢丝绳电动葫芦

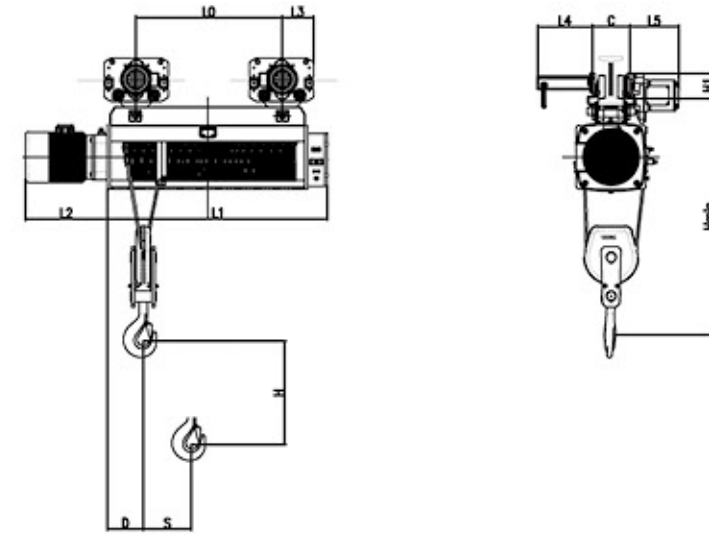
## PLANETARY FOH TYPE WIRE ROPE ELECTRIC HOIST

静音 平稳  
Quiet and steady

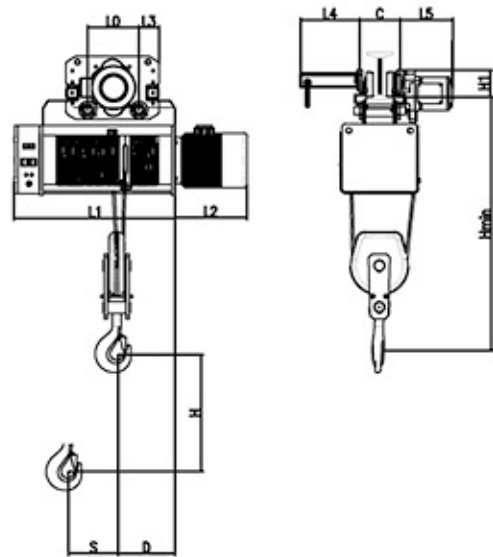
防冲顶 防绕绳  
Anti scour and anti winding rope

防斜拉 免维护  
No maintenance for cable-stayed protection

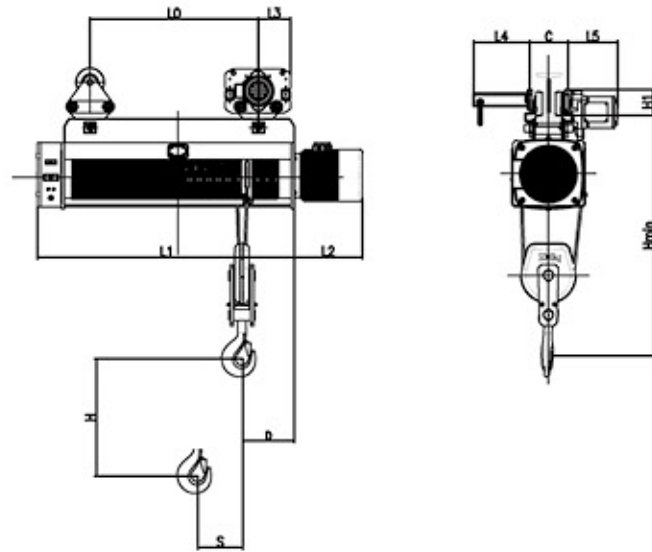
经久耐用 安全可靠  
Durable, safe and reliable



FOH FOHS 8-10t 9-30m 电动葫芦外形结构图



FOH FOHS 1-5t 9-12m 电动葫芦外形结构图



FOH FOHS 1-5t 18-30m 电动葫芦外形结构图

型号 type	FOH/FOHS	FOH/FOHS	FOH/FOHS	FOH/FOHS	FOH/FOHS	
起重量 Capacity (t)	2	3	5	8	10	
工作等级 Work level (FEM/ISO)	M4	M4	M4	M4	M4	
滑轮倍率 Pulley ratio	2/1	2/1	2/1	2/1	2/1	
起升速度 Lifting speed (m/min)	10/3.3	10/3.3	8/2.7	10/2.5	8/2	
起升功率 Lifting power (kW)	3	4.5	7.5	13	13	
运行速度 Travelling speed (m/min)	3/1	4.5/1.5	7.5/2.5	13/3.25	13/3.25	
运行功率 Travelling power (kW)	0.4	0.4	0.8	0.8*2	0.8*2	
L2(mm)	单速 Single speed	310	330	400	590	590
	双速 Double speed	310	330	700	850	850
C(mm)	工字钢 I-beam	110-180	110-180	130-180	140-180	140-180
	H型钢 H-beam	180-420	180-420	180-420	180-450	180-450
L3(mm)	80	80	210	210	210	
L5(mm)	230	230	230	230	230	
L4(mm)	405	405	405	405	405	
H1(mm)	130	130	150	150	150	
Hmin(mm)	1150	1200	1300	1450	1450	
S(mm)	0.0174H	0.0182H	0.0191H	0.0194H	0.0194H	
起升高度 Lifting height (m)	9	690 200	690 200	750 220	660 1060 220	660 1060 220
	12	790 200	790 200	470 870 220	770 1170 220	770 1170 220
	18	760 990 200	760 990 200	710 1110 220	990 1290 220	990 1290 220
	24	960 1190 200	960 1190 200	950 1350 220	1210 1510 220	1210 1510 220
	30	1160 1390 200	1160 1390 200	1190 1590 220	1430 1730 220	1430 1730 220
尺寸 size	L0 L1 D	L0 L1 D	L0 L1 D	L0 L1 D	L0 L1 D	



## 电动葫芦

ELECTRIC HOIST



CD 型电动葫芦



16t防爆电动葫芦



低静空电动葫芦



一体式电动葫芦



防爆低净空葫芦



双梁小车式电动葫芦

## 电动葫芦

ELECTRIC HOIST



沿海专用电动葫芦



环链电动葫芦



5t SZMD冷金葫芦



酸洗专用葫芦



16t电动葫芦

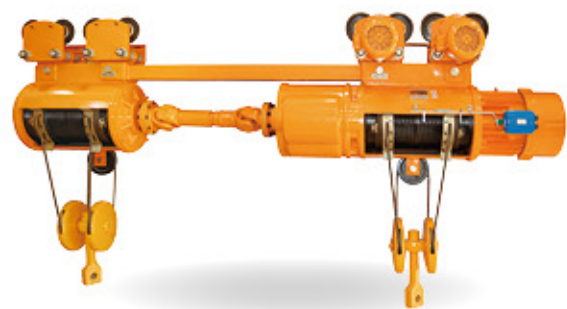


5t纵向电动葫芦(专利产品)



## 电动葫芦

ELECTRIC HOIST



2×10t超长双钩、同起同降电动葫芦



抓斗专用电动葫芦



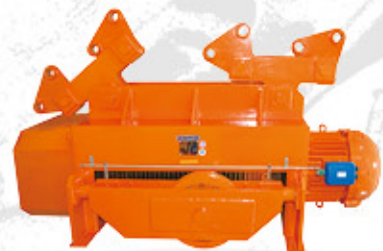
垃圾箱专用电动葫芦



10t-100m超高电动葫芦



5t双钩同起同降电动葫芦



32t-12m电动葫芦

## 电动平车

ELECTRIC FLAT CAR

电动平车因其方便、壮实、经济、实用、易清理等诸多优点，成为企业厂房内部及厂房与厂房之间短距离定点频繁运载重物的首选运输工具。

Because it is convenient, strong, economical, practical, and easy to clean, electric flat carriage has become preferred transportation for carrying weight frequently at fixed point in short distance in the workshop of enterprise or between workshop and workshop.





# 起重机配件

## CRANE ACCESSORIES



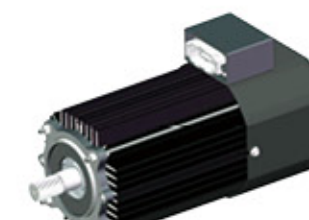
欧式行车轮  
New European driving wheel



无极变频起升电机  
Supporting electrical appliances



起升电机  
Supporting electrical appliances



运行电机  
Supporting electrical appliances



配套电器  
Supporting electrical appliances



运行齿轮箱  
Supporting electrical appliances



遥控器  
Remote control

